



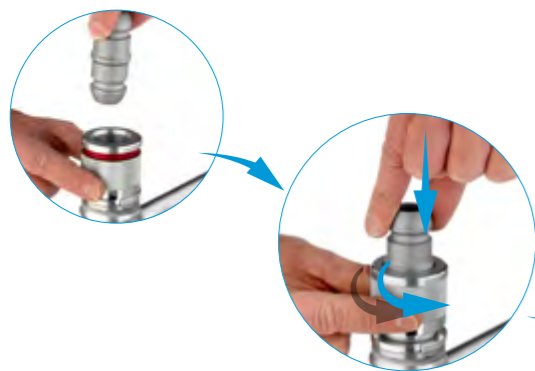
Photo: © Prolyte, Introduction of the Verto Truss at Prolight + Sound, Frankfurt, Germany

ROTATING COUPLING SYSTEM

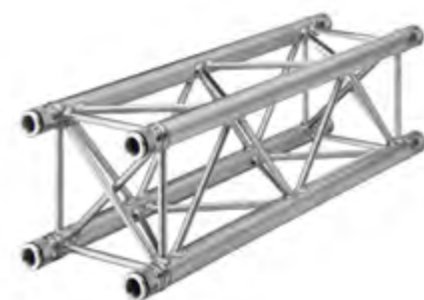
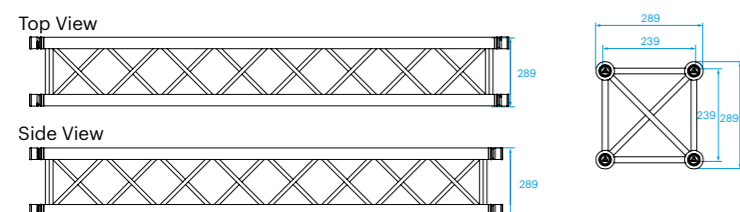
The Verto* truss is based on a new principle of truss connection, where the sections are joined by a rotating coupler system. This system has great advantages over existing systems. The name Verto is derived from Latin, meaning to turn or to turn around and that is exactly how this coupler works. A simple flick of your wrist will connect the truss modules. The Verto truss is designed as an additional system, for

those circumstances where its specific characteristics come into play, like the silent connection and reduced assembly time. Its structure resembles that of the standard H30V truss.

COUPLING SYSTEM: VER6-600

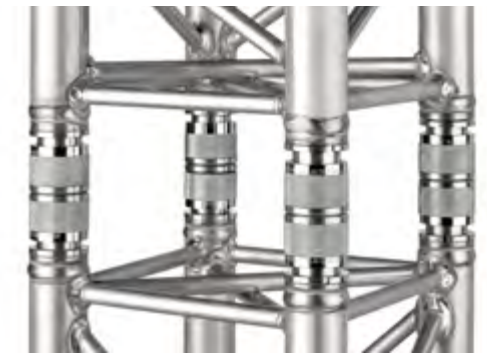


VER-H30V



BRINGING BENEFITS TO THE WORK FLOOR

This truss can greatly benefit the daily working practice for technicians, its tool-less connection is almost completely silent, thereby greatly adding to safety on the work floor. Tested general sound levels are around 55dB, where a conical truss system generates a sound level of 80dB during assembly. Furthermore, it reduces the assembly and disassembly time. Tested general assembly times are up to 5 times faster than those for truss with conical coupling systems and 10 times faster than any bolted truss.

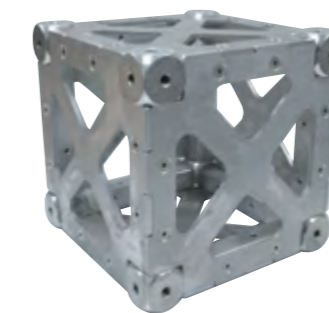
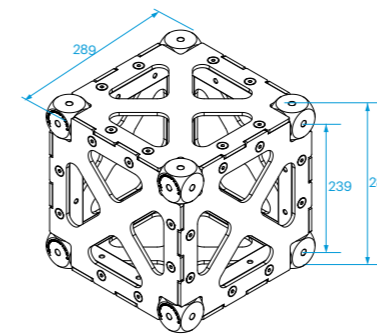


VERTO SYSTEM BENEFITS

- Tool-less system, no tools needed for assembly and disassembly.
- Safety indication: when the red ring is still visible, the connection is not (fully) closed.
- No protruding parts, ideal for attaching banners or drapes.
- Bringing safety to the work floor – its silent connection adds greatly to work floor communication.
- Incredible fast connection and disconnection, reducing production time.
- Strong and compact, based on the H30V truss with similar loading capacity.
- Coupling parts can be replaced, prolonging the general lifetime of your truss.
- Versatile system with many application possibilities, the additional box corner completes the system.

BOX-30V-HD-0

Box corner for Verto truss.



VER6-600

Conical coupler 600 series for Verto truss



VER6-625S

Coupler half male
To be used with bolt VER-M12x030-652S



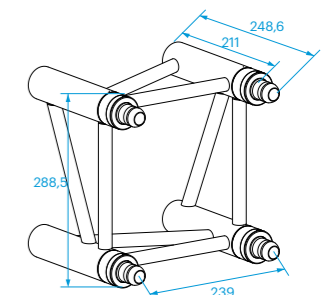
VER6-605

A plastic clip is available as a secondary safety measure. It can be simply clipped into place when a visual identifier is required.



VER-BOX-30V-A-001

Boxcorner attachment
To be used with BM-M12x035-IB, DIN 912 hexagon bolt





VER-H30V - Allowable Loading

SPAN		Uniformly Distributed Load		DEFLECTION		MAXIMUM ALLOWABLE POINT LOADS										SPAN
						Centre Point Load		Single Load Third Points Load per Point		Single Load Fourth Points Load per Point		Single Load Fifth Points Load per Point				
m	ft	kg/m	lbs/ft	mm	inch	CPL	DEFLECTION	TPL	QPL	FPL	total weight					
3	9,8	647,4	435,6	10	0,4	1557,0	3436,4	8	0,3	971,1	2143,3	647,4	1428,9	485,6	1071,6	21,4
4	13,1	483,8	325,5	18	0,7	1228,7	2711,7	15	0,6	862,4	1903,3	645,0	1423,6	483,8	1067,7	28,4
5	16,4	385,6	259,4	28	1,1	1025,0	2262,2	23	0,9	702,7	1550,8	565,7	1248,4	449,8	992,7	35,5
6	19,7	320,1	215,4	41	1,6	877,2	1935,9	33	1,3	609,1	1344,2	476,9	1052,6	375,4	828,5	42,6
7	23,0	254,1	170,9	56	2,2	764,6	1687,4	45	1,8	536,3	1183,6	411,1	907,3	326,1	719,7	49,7
8	26,2	192,8	129,7	73	2,9	675,8	1491,4	58	2,3	477,9	1054,8	360,2	794,9	287,4	634,4	56,8
9	29,5	150,8	101,5	92	3,6	603,7	1332,3	74	2,9	430,0	949,0	319,5	705,2	256,3	565,6	63,9
10	32,8	120,8	81,3	114	4,5	543,9	1200,3	91	3,6	389,8	860,2	286,2	631,6	230,5	508,7	71
11	36,1	98,6	66,3	137	5,4	493,3	1088,6	110	4,3	355,5	784,6	258,3	570,1	208,8	460,8	78,1
12	39,4	81,7	55,0	164	6,5	449,8	992,7	131	5,2	325,8	719,1	234,6	517,7	190,2	419,8	85,2
13	42,6	68,5	46,1	192	7,6	411,9	909,1	154	6,1	299,8	661,7	214,0	472,4	174,1	384,2	92,3
14	45,9	58,1	39,1	223	8,8	378,6	835,5	178	7,0	276,8	611,0	196,1	432,8	159,9	352,9	99,4
15	49,2	49,7	33,4	256	10,1	348,9	770,0	205	8,1	256,3	565,6	180,2	397,7	147,3	325,1	106,5
16	52,5	42,8	28,8	291	11,5	322,2	711,1	233	9,2	237,7	524,6	166,0	366,4	136,0	300,2	113,6
17	55,8	37,1	25,0	328	12,9	298,1	657,9	263	10,4	220,9	487,4	153,2	338,2	125,8	277,7	120,7
18	59,0	32,3	21,7	368	14,5	276,1	609,3	295	11,6	205,4	453,4	141,6	312,6	116,5	257,2	127,8
19	62,3	28,3	19,0	410	16,1	255,9	564,8	328	12,9	191,2	422,1	131,0	289,2	108,0	238,4	134,9
20	65,6	24,8	16,7	454	17,9	237,3	523,6	364	14,3	178,1	393,0	121,3	267,6	100,2	221,1	142

1 inch = 25,4 mm | 1m = 3.28 ft | 1 lbs = 0,453 kg

- Tüv certification only valid for loading table above.
- Loading figures are only valid for static loads.
- Loading figures are only valid for single spans with supports at both ends.
- All static systems, other than single spans, need an individual structural calculation. Please contact a structural engineer or Prolight for assistance.
- Loading figures are calculated according to and in full compliance with European standards (Eurocode).
- The self-weight of the trusses is already taken into account.
- Loading figures are only valid for the cross sectional orientation of the truss as shown by the icon in the loading table.
- The interaction between bending moment and shear force at the connection point is already taken into account.
- Truss spans can be assembled from different truss lengths.
- Read the manual before assembling, using and loading the truss.



Technical Specifications - Verto

Type	VER-H30V
Alloy	EN AW 6082 T6
Main Chords	48 x 3 mm
Diagonal Members	16 x 2 mm
Coupling System	Verto, CrMo4

VER-H30V - Standard available Lengths and Codes

Metres	Feet	Code
0,25	0.82	VER-H30V-L025
0,29	0.95	VER-H30V-L029
0,50	1.64	VER-H30V-L050
0,71	2.33	VER-H30V-L071
1,00	3.28	VER-H30V-L100
1,50	4.57	VER-H30V-L150
2,00	6.56	VER-H30V-L200
2,50	8.20	VER-H30V-L250
3,00	9.84	VER-H30V-L300
4,00	13.12	VER-H30V-L400

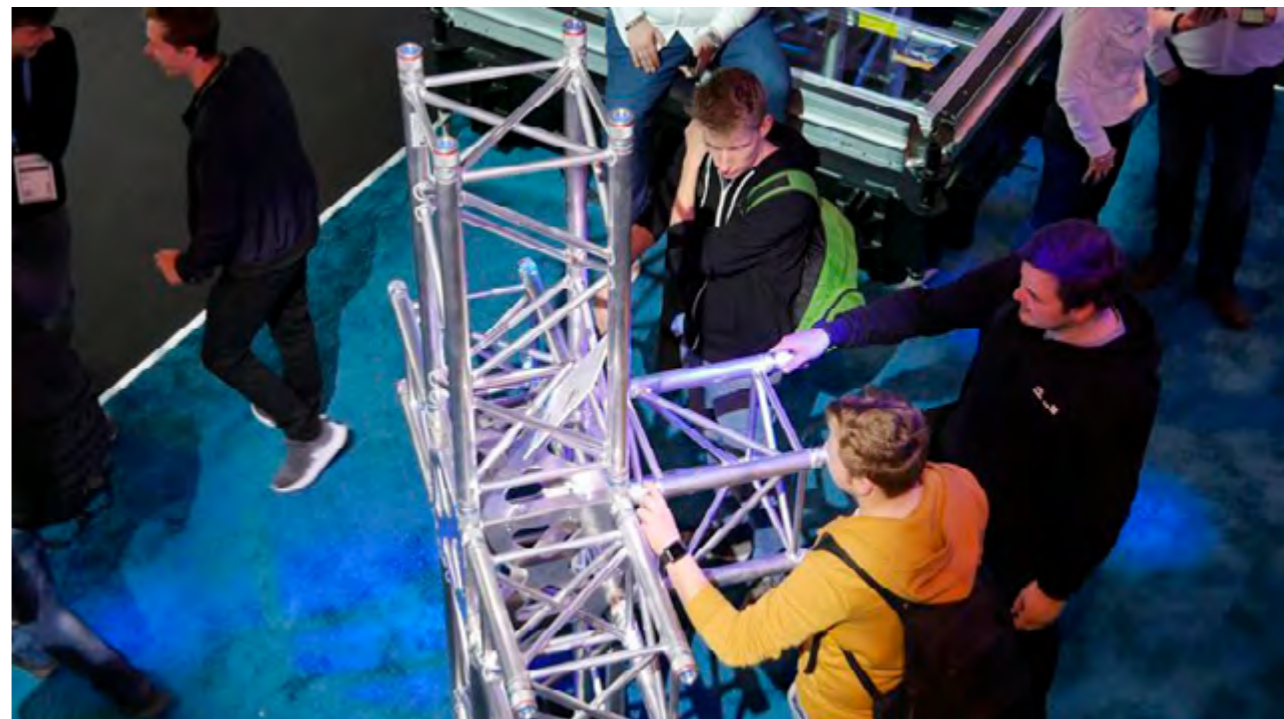


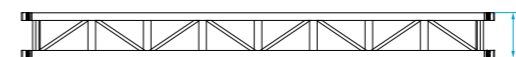
Photo: Prolite at Prolight + Sound, Frankfurt, Germany

The Verto-H40V offers extra strength compared to the Verto-H30V, next to its flexible application possibilities and is the ideal solution for the event or exhibition market. The Verto-H40R has a clever program of specifications;

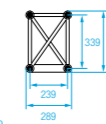
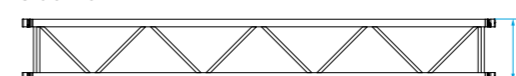
compact and strong, and three-sided webbing. The thicker braces on the bottom side allow easy mounting of moving heads and central loading, reducing the torsion effect resulting from one-sided loading in standard trusses.

VER-H40R

Top view

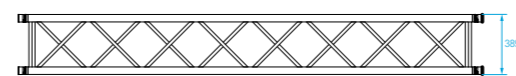


Side view

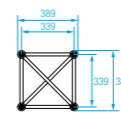
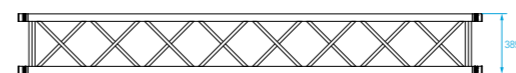


VER-H40V

Top view



Side view



VER-H40V - Allowable Loading

SPAN		Uniformly Distributed Load		DEFLECTION		MAXIMUM ALLOWABLE POINT LOADS										SPAN
						Centre Point Load		Single Load Third Points Load per Point		Single Load Fourth Points Load per Point		Single Load Fifth Points Load per Point				
m	ft	UDL	UDL	mm	inch	CPL	CPL	DEFLECTION	DEFLECTION	TPL	TPL	QPL	QPL	FPL	FPL	total weight
3	9,8	834,5	561,5	7	0,3	2011,3	4438,9	6	0,2	1251,7	2762,5	834,5	1841,7	625,8	1381,2	24
4	13,1	624,0	419,9	13	0,5	1595,7	3521,8	10	0,4	1100,7	2429,2	832,1	1836,4	624,0	1377,3	32
5	16,4	497,8	334,9	20	0,8	1352,2	2984,4	16	0,6	915,7	2021,0	768,2	1695,3	612,0	1350,7	40
6	19,7	413,6	278,3	29	1,1	1171,3	2585,1	23	0,9	793,0	1750,2	656,1	1448,0	506,0	1116,8	48
7	23,0	353,5	237,9	40	1,6	1031,4	2276,3	32	1,2	706,6	1559,4	569,5	1256,9	443,4	978,6	56
8	26,2	276,5	186,1	52	2,0	919,6	2029,6	41	1,6	636,2	1404,1	502,1	1108,2	394,0	869,5	64
9	29,5	217,0	146,0	65	2,6	828,2	1827,8	52	2,1	577,6	1274,8	448,1	988,9	353,8	780,9	72
10	32,8	174,4	117,3	81	3,2	751,8	1659,1	65	2,5	528,0	1165,4	403,7	890,9	320,4	707,2	80
11	36,1	142,9	96,1	98	3,8	686,8	1515,9	78	3,1	485,5	1071,4	366,5	808,8	292,2	644,9	88
12	39,4	118,9	80,0	116	4,6	630,9	1392,4	93	3,7	448,4	989,7	334,8	738,9	268,0	591,4	96
13	42,6	100,2	67,4	137	5,4	582,1	1284,4	109	4,3	415,8	917,7	307,4	678,5	246,9	545,0	104
14	45,9	85,4	57,5	158	6,2	539,0	1189,6	127	5,0	386,9	853,9	283,5	625,7	228,4	504,1	112
15	49,2	73,5	49,5	182	7,2	500,7	1105,0	146	5,7	361,0	796,7	262,4	579,1	212,0	467,9	120
16	52,5	63,7	42,9	207	8,1	466,3	1029,0	166	6,5	337,6	745,1	243,5	537,5	197,3	435,4	128
17	55,8	55,6	37,4	234	9,2	435,1	960,4	187	7,4	316,4	698,2	226,6	500,1	184,0	406,1	136
18	59,0	48,8	32,9	262	10,3	406,8	897,8	210	8,3	296,9	655,4	211,3	466,3	171,9	379,5	144
19	62,3	43,1	29,0	292	11,5	380,9	840,6	233	9,2	279,1	615,9	197,3	435,5	160,9	355,2	152
20	65,6	38,2	25,7	323	12,7	357,0	787,8	259	10,2	262,6	579,5	184,5	407,2	150,8	332,8	160

1 inch = 25,4 mm | 1m = 3.28 ft | 1 lbs = 0,453 kg

Without deflection limit

- Tüv certification only valid for loading table above.
- Loading figures are only valid for static loads.
- Loading figures are only valid for single spans with supports at both ends.
- All static systems, other than single spans, need an individual structural calculation. Please contact a structural engineer or Prolyte for assistance.
- Loading figures are calculated according to and in full compliance with European standards (Eurocode).
- The self-weight of the trusses is already taken into account.
- Loading figures are only valid for the cross sectional orientation of the truss as shown by the icon in the loading table.
- The interaction between bending moment and shear force at the connection point is already taken into account.
- Truss spans can be assembled from different truss lengths.
- Read the manual before assembling, using and loading the truss.

Technical Specifications – Verto H40V

Type	VER-H40V
Alloy	EN AW 6082 T6
Main Chords	48 x 3 mm
Braces	20 x 2 mm
Coupling System	Verto, CrMo4

Standard available lengths and codes H40V series

Metres	Feet	Code
0,50	1,64	VER-H40V-L050
1,00	3,28	VER-H40V-L100
1,50	4,57	VER-H40V-L150
2,00	6,56	VER-H40V-L200
2,50	8,20	VER-H40V-L250
3,00	9,84	VER-H40V-L300
4,00	13,12	VER-H40V-L400

VER-H40R - Allowable Loading

SPAN		Uniformly Distributed Load		DEFLECTION		MAXIMUM ALLOWABLE POINT LOADS										SPAN
						Centre Point Load		Single Load Third Points Load per Point		Single Load Fourth Points Load per Point		Single Load Fifth Points Load per Point				
m	ft	UDL	UDL	mm	inch	CPL	CPL	DEFLECTION	DEFLECTION	TPL	TPL	QPL	QPL	FPL	FPL	total weight
3	9,8	834,5	561,5	7	0,3	2011,3	4438,9	6	0,2	1251,7	2765,5	834,5	1841,7	625,8	1381,2	24
4	13,1	624,0	419,9	13	0,5	1595,7	3521,8	10	0,4	1100,7	2429,2	832,1	1836,4	624,0	1377,3	32
5	16,4	497,8	334,9	20	0,8	1352,2	2984,4	16	0,6	915,7	2021,0	768,2	1695,3	612,0	1350,7	40
6	19,7	413,6	278,3	29	1,1	1171,3	2585,1	23	0,9	793,0	1750,2	656,1	1448,0	506,0	1116,8	48
7	23,0	353,5	237,9	40	1,6	1031,4	2276,3	32	1,2	706,6	1559,4	569,5	1256,9	443,4	978,6	56
8	26,2	276,5	186,1	52	2,0	919,6	2029,6	41	1,6	636,2	1404,1	502,1	1108,2	394,0	869,5	64
9	29,5	217,0	146,0	65	2,6	828,2	1827,8	52	2,1	577,6	1274,8	448,1	988,9	353,8	780,9	72
10	32,8	174,4	117,3	81	3,2	751,8	1659,1	65	2,5	528,0	1165,4	403,7	890,9	320,4	707,2	80
11	36,1	142,9	96,1	98	3,8	686,8	1515,9	78	3,1	485,5	1071,4	366,5	808,8	292,2	644,9	88
12	39,4	118,9	80,0	116	4,6	630,9	1392,4	93	3,7	448,4	989,7	334,8	738,9	268,0	591,4	96
13	42,6	100,2	67,4	137	5,4	582,1	1284,4	109	4,3	415,8	917,7	307,4	678,5	246,9	545,0	104
14	45,9	85,4	57,5	158	6,2	539,0	1189,6	127	5,0	386,9	853,9	283,5	625,7	228,4	504,1	112
15	49,2	73,5	49,5	182	7,2	500,7	1105,0	146	5,7	361,0	796,7	256,4	579,1	212,0	467,9	120
16	52,5	63,7	42,9	207	8,1	466,3	1029,0	166	6,5	337,6	745,1	243,5	537,5	197,3	435,4	128
17	55,8	55,6	37,4	234	9,2	435,1	960,4	187	7,4	316,4	698,2	226,6	500,1	184,0	406,1	136
18	59,0	48,8	32,9	262	10,3	406,8	897,8	210	8,3	296,9	655,4	211,3	466,3	171,9	379,5	144
19	62,3	43,1	29,0	292	11,3	380,9	840,6	233	9,2	279,1	615,9	197,3	435,5	160,9	355,2	152
20	65,6	38,2	25,7	323	12,7	357,0	787,8	259	10,2	262,6	579,5	184,5	407,2	150,8	332,8	160

1 inch = 25,4 mm | 1m = 3.28 ft | 1 lbs = 0,453 kg

Without deflection limit

- Tüv certification only valid for loading table above.
- Loading figures are only valid for static loads.
- Loading figures are only valid for single spans with supports at both ends.
- All static systems, other than single spans, need an individual structural calculation. Please contact a structural engineer or Prolyte for assistance.
- Loading figures are calculated according to and in full compliance with European standards (Eurocode).
- The self-weight of the trusses is already taken into account.
- Loading figures are only valid for the cross sectional orientation of the truss as shown by the icon in the loading table.
- The interaction between bending moment and shear force at the connection point is already taken into account.
- Truss spans can be assembled from different truss lengths.
- Read the manual before assembling, using and loading the truss.

Technical Specifications – Verto H40R

Type	VER-H40R
Alloy	EN AW 6082 T6
Main Chords	48 x 3 mm
Braces	20 x 2 mm
Coupling System	Verto, CrMo4

Standard available lengths and codes H40R codes

Metres	Feet	Code
0,50	1,64	VER-H40R-L050
1,00	3,28	VER-H40R-L100
1,50	4,57	VER-H40R-L150
2,00	6,56	VER-H40R-L200
2,50	8,20	VER-H40R-L250
3,00	9,84	VER-H40R-L300
4,00	13,12	VER-H40R-L400